

PART OF THE E. 1/2, OF SEC. 10, T.5N., R.1W., S.L.B. &amp; M.

## QUAIL RIDGE ESTATES NO. 5

IN OGDEN CITY

TAXING UNIT: 25

SCALE 1" = 50'

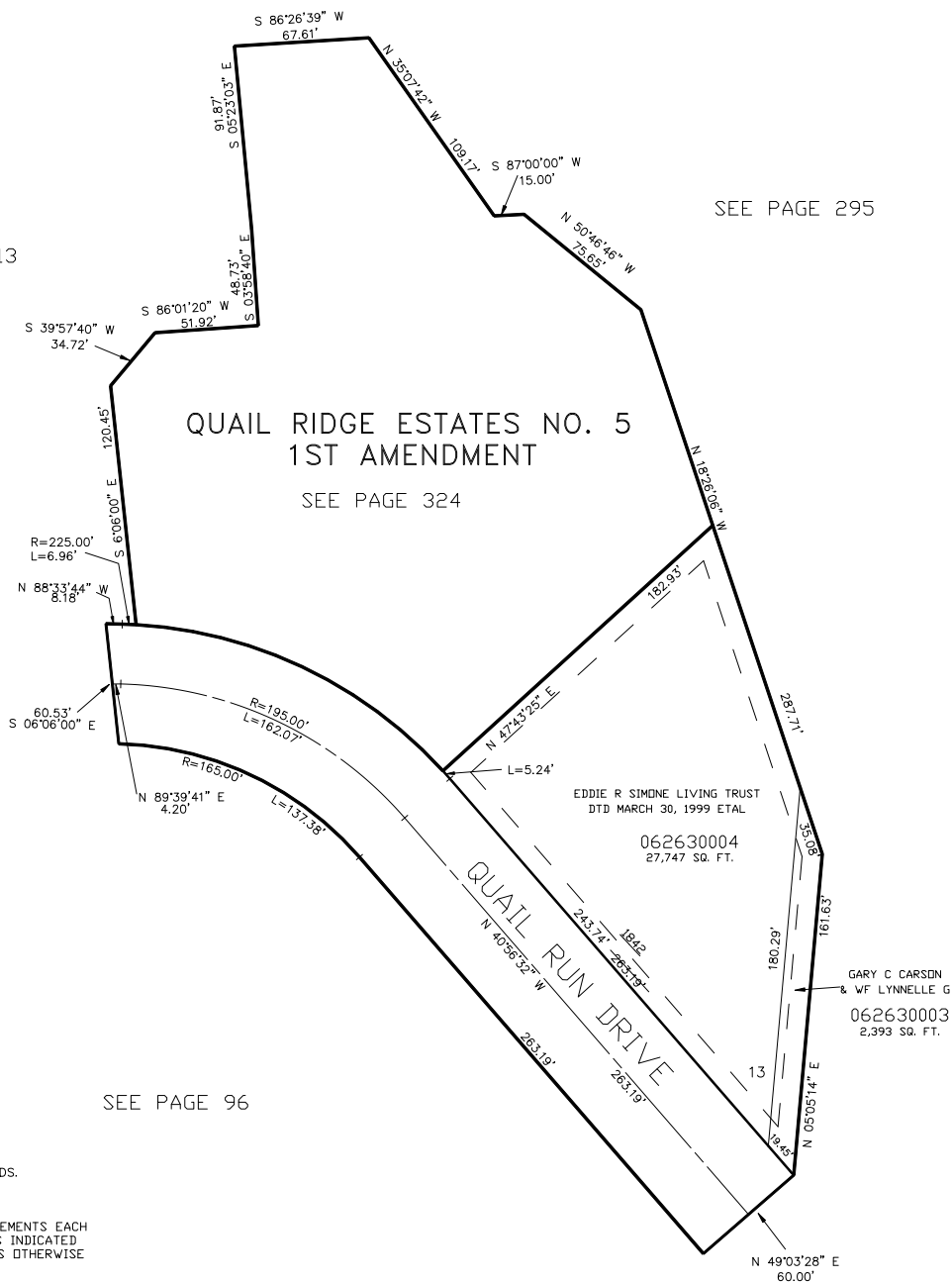
SEE PAGE 226

SEE PAGE 213

SEE PAGE 295

QUAIL RIDGE ESTATES NO. 5  
1ST AMENDMENT

SEE PAGE 324



FOR COMPLETE ENG DATA SEE  
ORIGINAL DEDICATION PLAT IN  
BOOK 45, PAGE 94 OF RECORDS.

10' UTILITY & DRAINAGE EASEMENTS EACH  
SIDE OF PROPERTY LINES AS INDICATED  
BY DASHED LINES EXCEPT AS OTHERWISE  
SHOWN.

SEE PAGE 96